

Assembly Instruction elevating roof VW Caddy Maxi

Modell: superflat, 2 parts, rear opening, Artno. 22118*

*=Place holder: 6&7 Position for construction variations

Attention!

Before starting with the following tasks, please make sure that you have read the assembly instructions fully and you have all the necessary tools to hand.

Please follow the mounting instructions in the order described.

Failure to comply with these instructions or make changes to the roof, frame or closing-system will invalidate the guarantee and Reimo will not accept responsibility for any defects of future warranty claims which may develop.

Information for vehicle owners

Immediate execution and confirmation of the acceptance of modification in conjunction with the accompanying certificate of conformity:

Due to any changes, the approval of the vehicle shall expire, if not as per StVZO § 19 section 3 the prescribed acceptance procedure has not been executed fully and confirmed or if certain requirements are not met.

After the technical modification the vehicle should go to an officially authorized expert or a technical test center or a test engineer of an officially recognized monitoring organizations promptly to perform to an officially authorized expert or inspector of a technical test center or a test engineer of an officially recognized monitoring organization for the execution and confirmation of the prescribed approval.

For other countries please check your local regulations

The following tools and materials will be needed:

Drill, steel drill bits 2.5, 5.1, 3.0 - 10.0 mm, jig saw with hacksaw blade, felt pen, measuring tape, cartridge pistol, adhesive tape, carpet knife, hand riveter for steel rivets Dia. 5mm, rivet nut plier for rivet nut M6, metal file, 2 wrenches SW 10, screwdriver, safety goggles, work gloves, Scotchbrite or similar, anticorrosion paint and 2 sash clamps.

Sikaflex-Entferner Artnr.29416 oder anderer geeigneter Verdünner.

Sikaflex-Haftreiniger Artnr.29415. Schleifvlies oder vergleichbares

REIMO-Einbaurahmen Artnr.22122

Recommended accessory:

roof bed article no. 22123*

roof panel kit 10560

* = construction variation

Topic A1 of the assembly instruction. Topic: Installation frame, article no.22122

1. Vehicle preparation:

- Removing the vehicles roof panel and the seats, covering the floor and the dashboard.
- Vehicles that have an original sidewall cladding, then all the parts above the window will have to be removed.
- Cover the vehicle from the upper section of the windows outside, so that no metal filings can damage the paintwork.
- Extract the cable from the cut-out section.

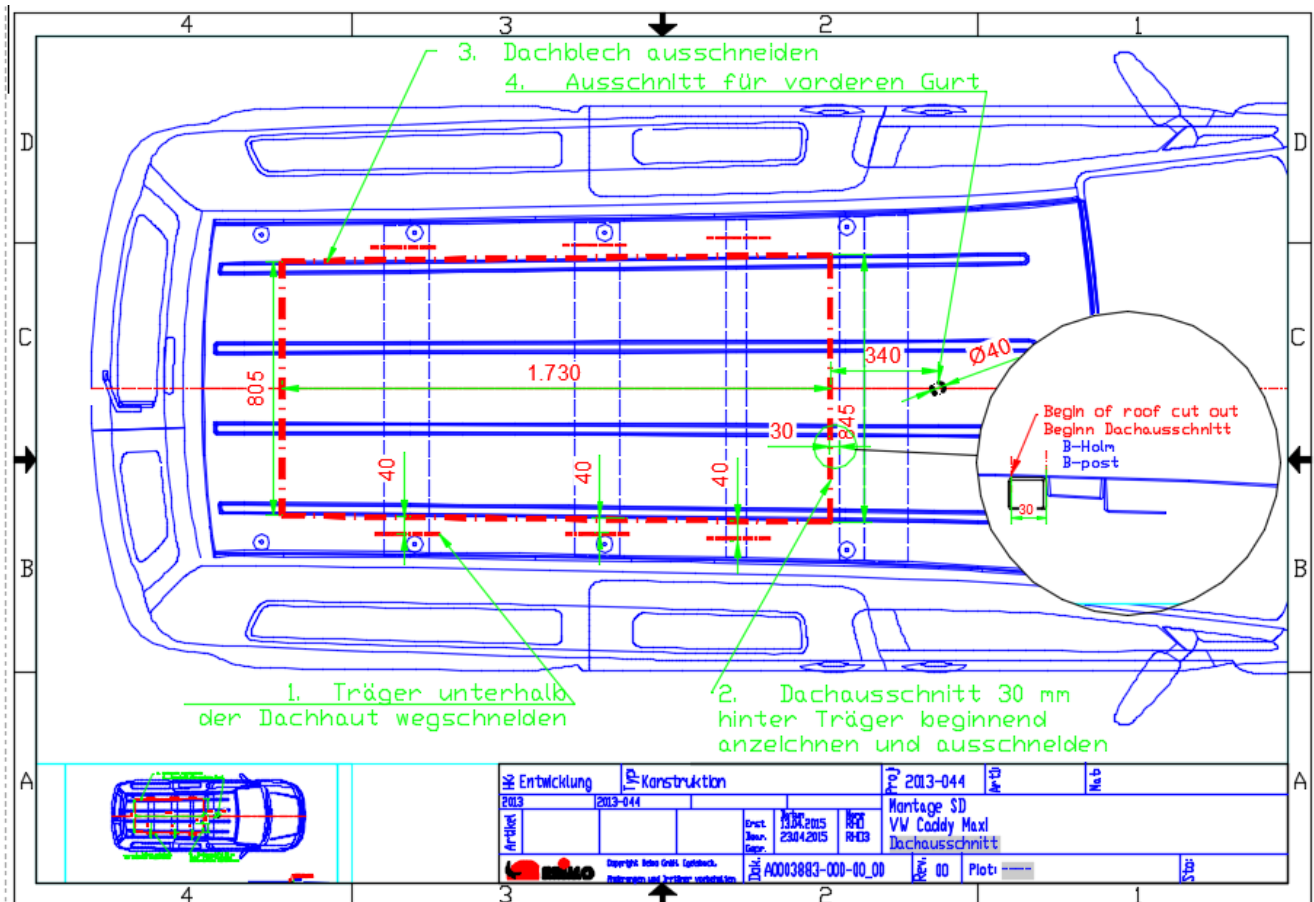
2. Roof cut-out:

- As per attached subscription mark the measures on the vehicle roof and check it up.
- Drill a 10mm hole in each corner for the start point of the jig saw and as corner radius. Don't cut sharp corners.
- Cut marked bows from underneath (with 40 mm distance to the roof cut out) and remove the middle part.
- Cut out the sheet metal roof along the marked line. The easiest way to do that is to start by sawing from the corners to the middle and afterwards lengthwise. If the corner has been cut, support the sawed sheet metal with battens.

Caution: The remains of the two bows are required for connecting the tabs with the frame.

Therefore, you need to cut only in the distance of the frame. The slight strut outside could only removed from the outside. Wear safety goggles and work gloves. Pay attention to the cables in the corner when you cut.

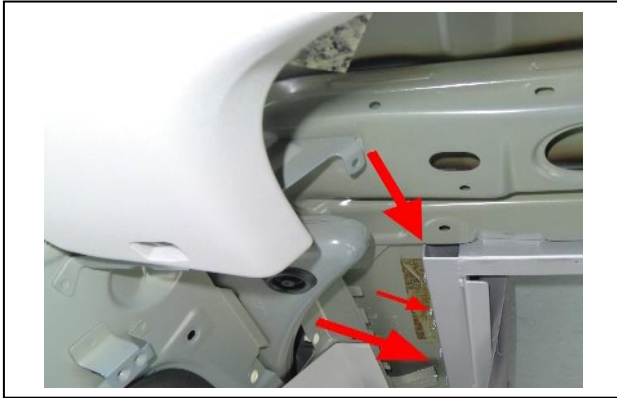
- Lift the clipped roof down from the vehicle (with the help of a second person).
- Deburr the cut edges a metal file and treat it with anticorrosion paint.
- Cut the hole Dia. 40 mm for the front belt in the designed position





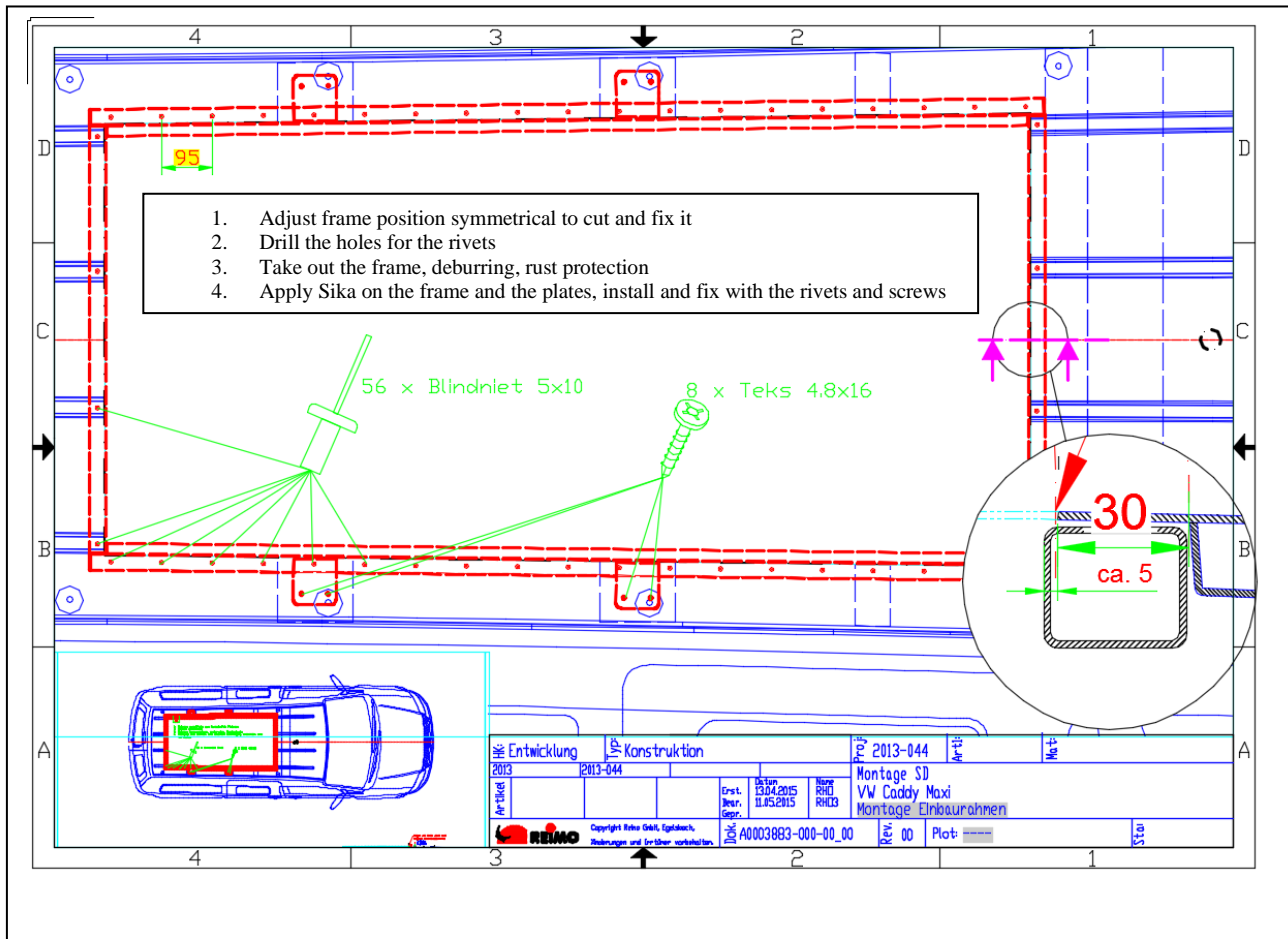
1. Cut our starts 30 mm behind end of B-Post

2. ends of cutted bows will be needed to fix frame



3. frame position at B-post

4. frame position at end of car



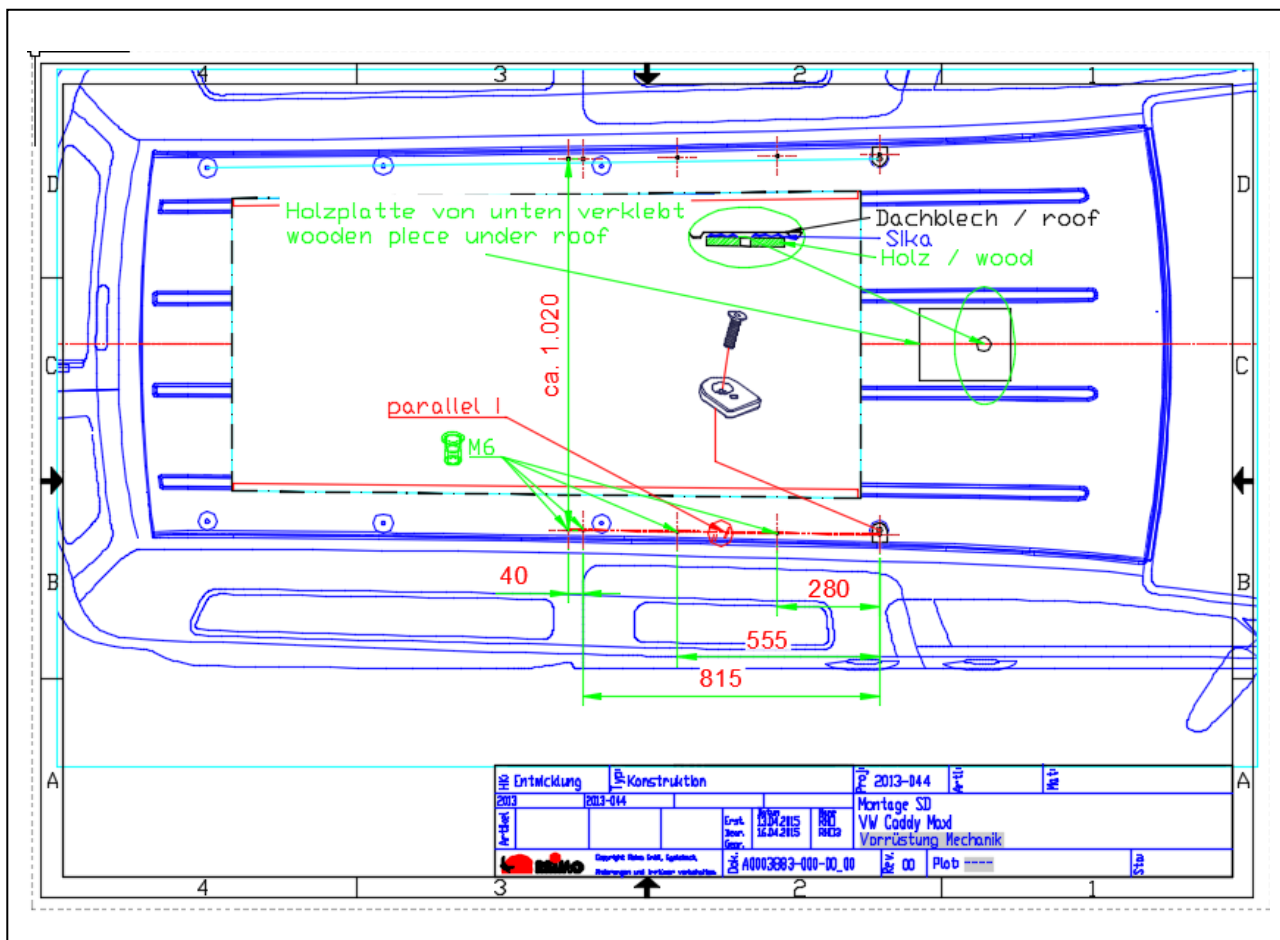
3. Mounting roof reinforcement frame:

- Prepare gluing areas on both sides (reinforcement frame to car body) with Sikaflex-adhesive cleaner according to the instructions
(1. With non-woven web whet smoothly. 2. Cleaning with adhesive cleaner / Sika-Cleaner 205. Curing time: min. 10Min. / max. 2 hrs.)
- Apply Sika on the frame and the plates and fix it with the screws and rivets.

Caution: Remove the excess Sikaflex directly. Until the curing process of the glue (approx. 24 hrs.) the vehicle should not be moved. If you want to move the vehicle earlier, you should use Sikaflex Ultrafast, art. No.29484.

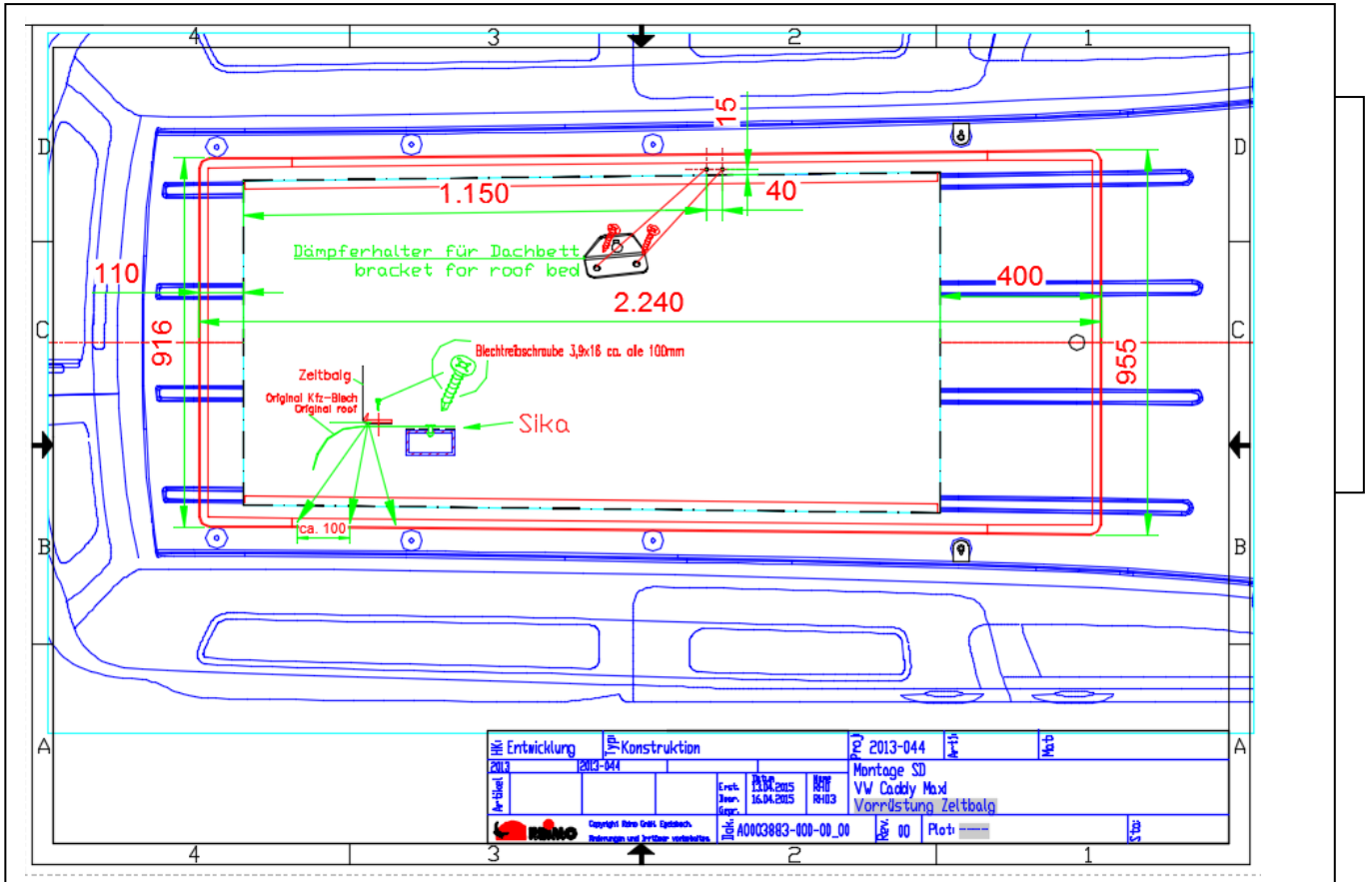
4. Pre-installation of the roof hinge

- Screw the adapter plate to the front point of the roof cutout and bond it with Sika (see picture). This will be the front attachment of the hinge.
- Drill the other fixing points according to the drawing.
- Pre-drill the fastening positions of the hinge and the gas spring bracket with a 6.0 drill and drill out to 9.0mm.
- After that, debur the borings and eliminate all drill filings. Treat the drill holes with anti corrosion paint and place the rivet nuts.



5. Preparation of canvas installation (compare diagram)

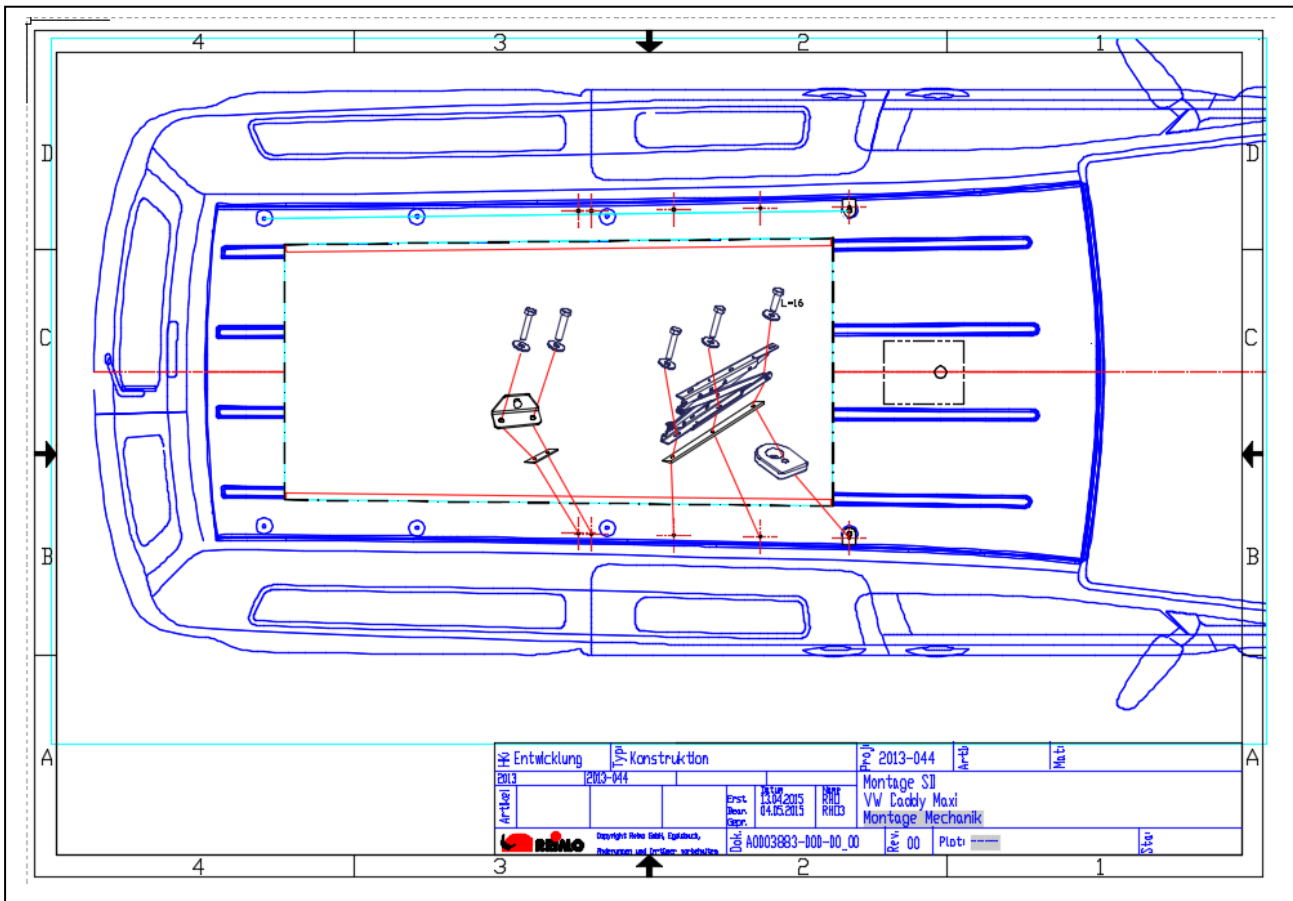
- Warm up the pre-perforated canvas bellow strips with a hair dryer and bow it accordingly.
- The position of the rear tent bellow strip see picture.
- Fix the tent bellow strip with the delivered screws at few points and pre-drill the strips every 10cm (Dia. 2.5mm).
- Remove again all tent bellow strips, clean and treat with anticorrosion paint.



6. Hinge mechanisms

Attention: Open the hinges only at the front, if they are pulled from the middle, they can close shut.

- Fix the gas spring brackets together with the rubber sealing (thick side outside) with screws
- Glue the rubber profile for the hinge with the thicker side outwards at the car body.
- Put the roof on and adjust it.
- First screw the mechanics on loosely before checking position.
- Carefully raise it and tighten the front screw, re-check the position.
- Carefully raise it furthermore and tighten the rear screws of the mechanism, check for final time.
- Raise up the roof and hang the gas absorber. (Protective tube downward)
- Seal the transition hinge/bracket-bodyshell with silicone



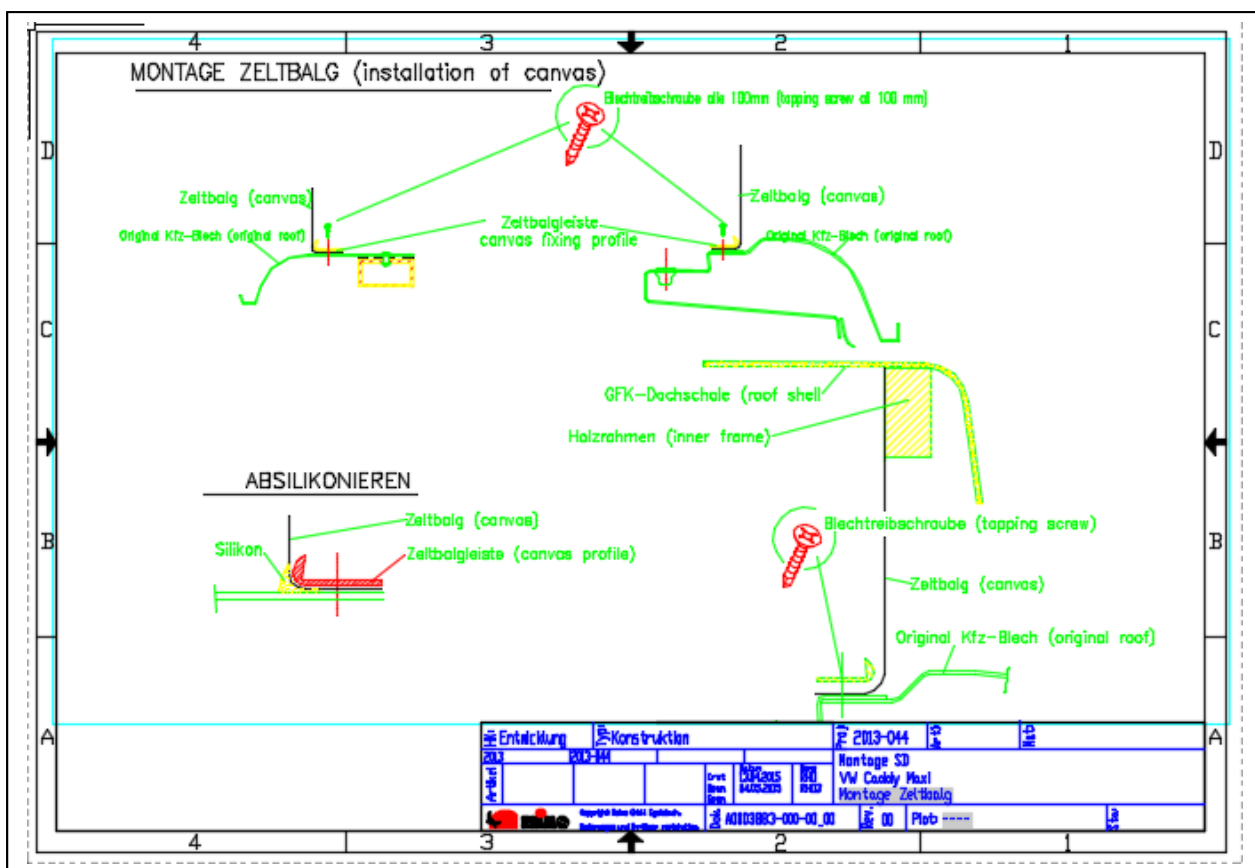
7. Installation of front spoiler

- Put the front spoiler onto the vehicle and check the fitting.
If necessary modify the fitting with grinding tool until it is good.
- Use masking tape on spoiler and car side to prepare a bead of sealant of 6 mm width all around.
- Take the front spoiler from the vehicle and put it on the bottom upside down.
- Grind the inner side of the spoiler approximately 50 mm high (use safety goggles and dust mask).
- Roughen the outer adhering area slightly with Scotchbrite or similar.
- At the vehicle: You should also roughen the varnish at the adhering area approx.60 mm wide carefully with Scotchbrite or similar. If there is any rust it must be repaired professionally. Rust leads to a detachment of the adhesive, which shall be infiltrated by the rust as time goes on.
- Carefully remove the dust from the vehicle and the spoiler. Clean carefully all adhesive areas.
- Then apply thick Sikaflex points at the adhesive area of the front spoiler above the windscreen.
- Put the front spoiler in position and secure it with adhesive tape.
- It should be firmly pressed into position, but do not over do it, as tension cracks might appear.
- Remove any excess Sikaflex immediately and then leave the vehicle overnight.
- Seal the outside with Sikaflex 221 black by running a bead as neatly as possible then simply take your fingers and Sika smoothing agent N or a soap sud to smooth out. Then remove the masking and carefully finish the bead for a neat finish. For a permanent UV-consistency you should use black Sikaflex 221 or otherwise paint the sealed bead.



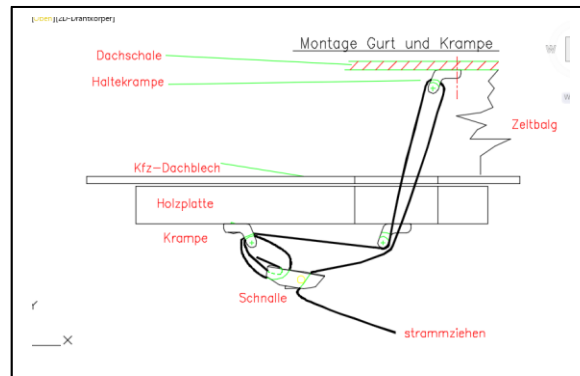
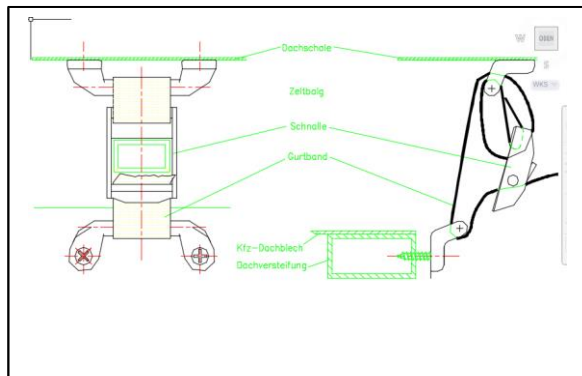
8. Fixing of the canvas bellow

- Retrieve the roof carefully which will be in the fully opened position (therefore press down the roof a little with your hand) and close it half 2-3 times.
- Close all zips prior to the mounting.
- Fix the front and the rear with a screw with orientation to the corner welds and the tent bellow strips in the middle
- Lay the tent bellow around under the strips.
- Slowly unclamp the corners and while holding with one hand, fix with the another.
- Unclamp the tent bellow from the front to the rear completely all around.
- Seal the tent bellow from outside to the vehicle body with silicone (apply a fine bead and smooth it with a moistened finger to a fillet - Perhaps mask the car body with adhesive tape before.) In the area of the mechanism there is a lack of access, you will need a small piece of pipe or hose to smooth off the silicone.
- After the hardening of the silicone, the rest of the canvas bellow material should be cut at the inner side of the strips. Seal along the cut material with silicone.



9. Installation of roof belt locks

- **Caution: 3 Belt locks are required.**
- First lock in the front above the middle of the drivers cab
- Compare the sketch how to install the belt and the metal lock arms.
- *To open the roof, you don't need to open the front belt totally, you only have to loosen it fully making it easy to lock it again when closing the roof.*
- 2 Belt locks at the rear side
- For installation compare the sketch (Teks 4, 8x32)
- Attach the straps according to the diagram below and tighten it.
- Put the supplied indicator plate in a suitable position on the dashboard.



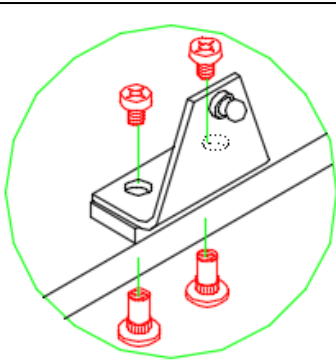
10. Mounting of the cladding (optional)

There are several possibilities for the interior roof cladding:

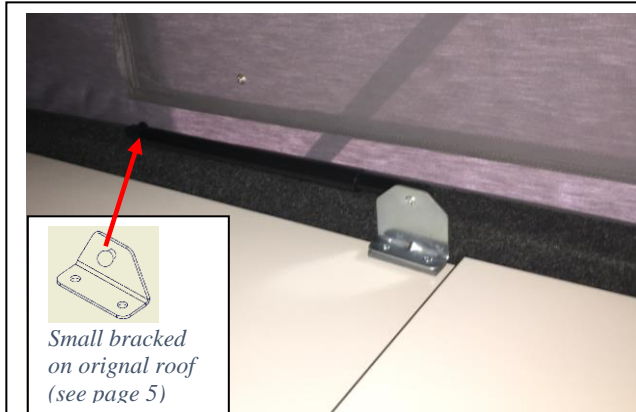
- In the drivers cab the original roof cladding can be used
 - **Caution: Install the wooden fixing bar for the front belt**
 - Cut the hole for the belt lock before installation
- The metal frame can be covered with carpet.
- For the roof cladding under the strengthening frame a special kit of 3mm panels is available.

Installation of roof bed 22123

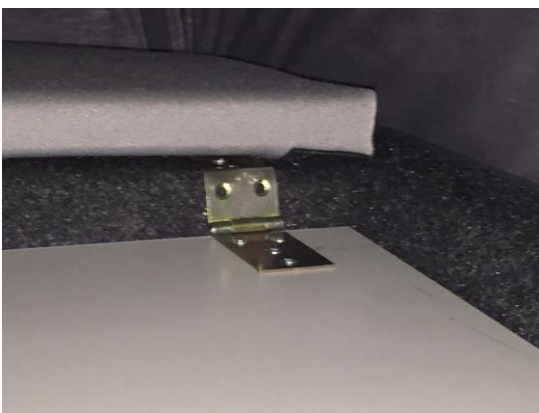
- Fix the small bracket on the thread rivets (compare diagram on page 5)
- Fix the height brackets with the spacer on the bed (compare diagram below).
- Apply the edge profile to the metal corner of frame. (not needed if you are using carpet to cover the frame)
- Put the bed in and adjust it direct to the front.
- Screw the hinges on top of the original roof.
- Attach the gas struts to the brackets.
- Insert the mattress



High bracket on roof bed, installed with spacer



Small bracketed on original roof (see page 5)



Roof bed hinge fixing

Dear Customer

These assembly instructions have been compiled from the experience of technical experts and 30 years' experience with and from our customers.

Please help us in continuing to keep these instructions up to date for you and our customers.

We appreciate your criticism or suggestions and are available for you around the clock under the Fax no. 06150/8662395.

With best regards

Your team from
REIMO

REIMO Reisemobilcenter GmbH
Boschring 10 - 63329 Egelsbach

Installation confirmation

I herewith certify that I have installed the following Reimo roof according to the mounting instructions of the Reimo Reisemobilcenter GmbH.

Type of roof: Slimline Rear Height

Product number: 22118** (laminated, driver's cab inside)

Production digit:

Article no. 22118*

Vehicle type: VW Caddy Maxi

Chassis-no.:

by

Name:

First name:

Street:

City:

Date: Signature:

* = Construction version